

# The Maple Keys



**BOER**homes

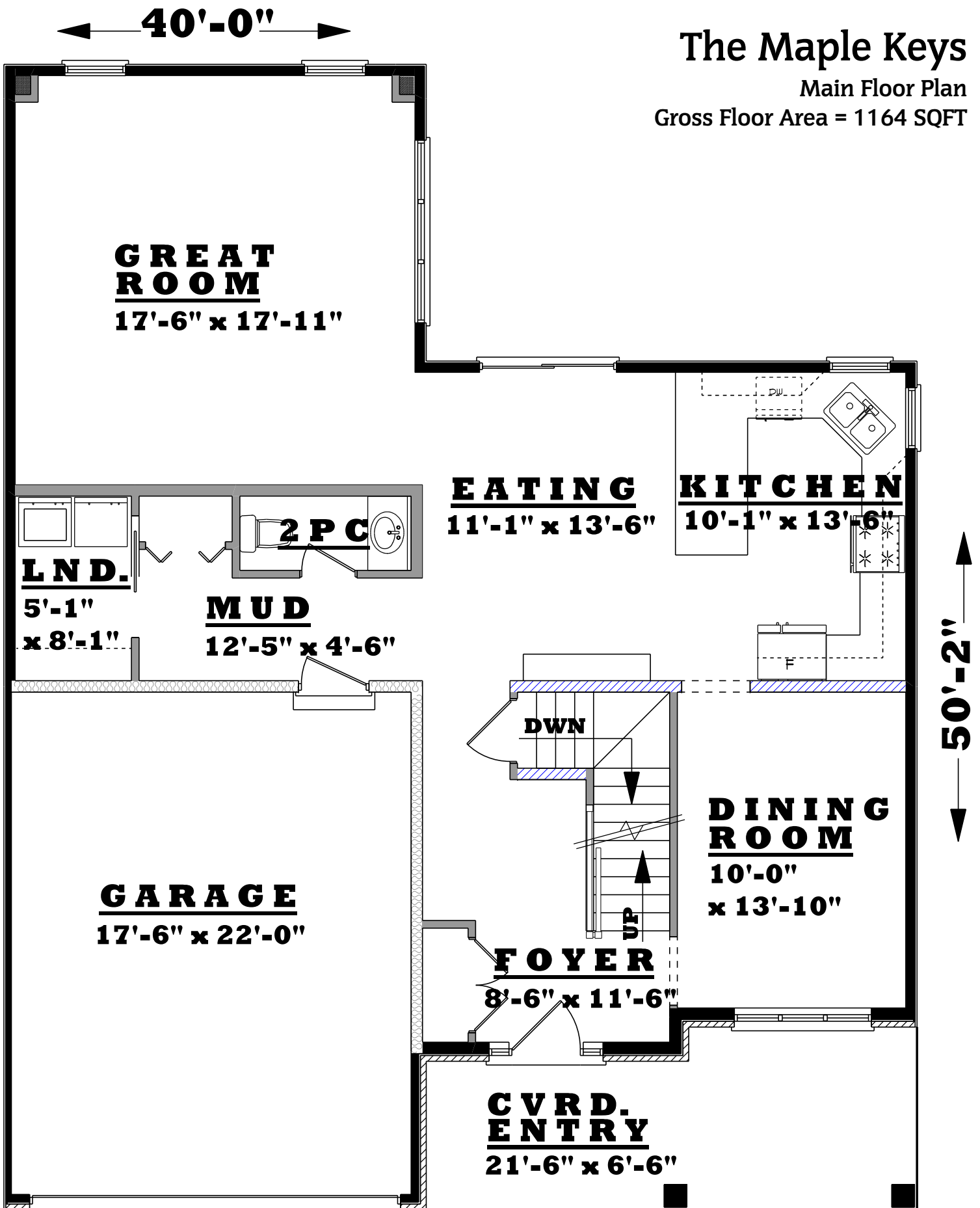
QUALITY CONSTRUCTION SINCE 1969

(519) 426-1685

[www.boerhomes.com](http://www.boerhomes.com)

# The Maple Keys

Main Floor Plan  
Gross Floor Area = 1164 SQFT

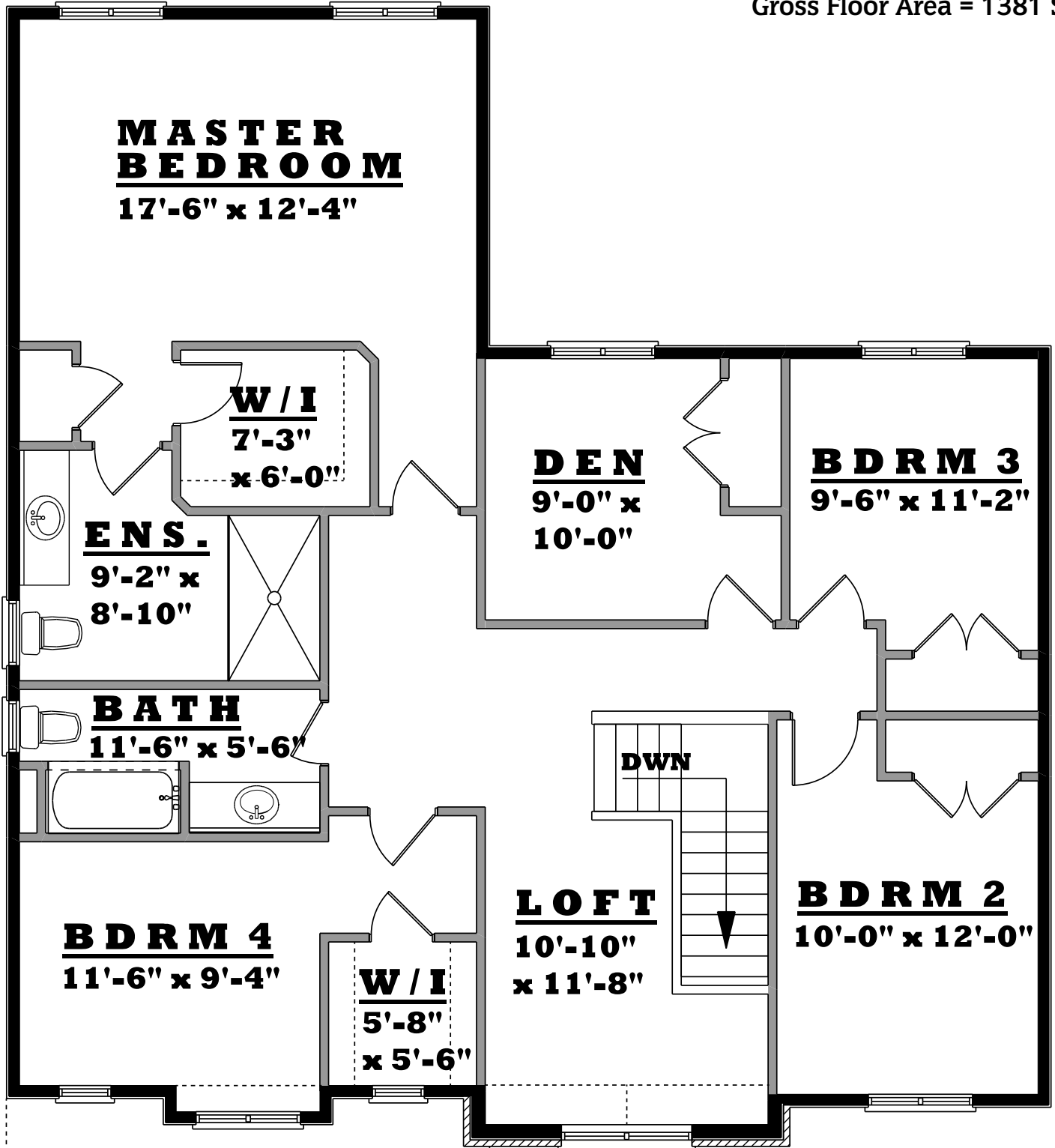


# The Maple Keys

Second Floor Plan

Gross Floor Area = 1381 SQFT

40'-0"



43'-8"